



ADDENDUM #3
ISSUE DATE: July 28, 2022

INVITATION FOR BID
IFB # 23-4110-027

DEPARTMENT OF BUDGET AND FINANCE
17090 Monument Circle, Suite 137
Isle of Wight, VA 23397
<https://www.co.isle-of-wight.va.us/>

Windsor Library Addition

This Addendum supplements or modifies the original Solicitation noted above and is made part of the Invitation for Bid. This Addendum consists of two (2) pages inclusive of cover page.

Attached: Drawing - Clarification for Lighting fixture controls

Contract Officer:

Stephanie Humphries, Acting Purchasing Agent, shumphries@isleofwightus.net

****A SEALED HARD COPY SHALL BE PROVIDED****

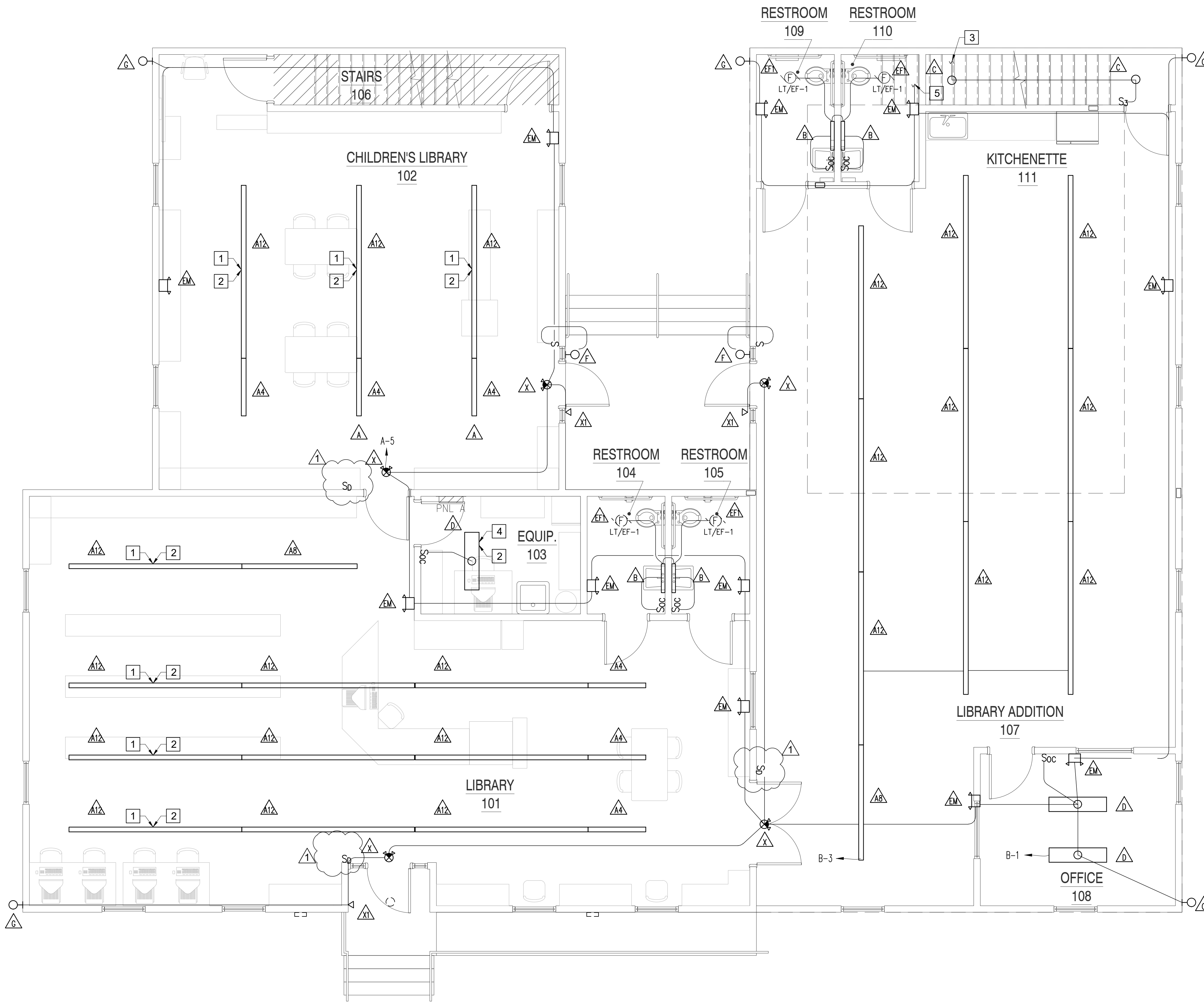
Stephanie Humphries, Acting Purchasing Agent, is the contract officer for Isle of Wight County with respect to this IFB. All questions and/or comments should be directed to her at shumphries@isleofwightus.net. The respondents to this IFB shall not contact, either directly or indirectly, any other employee or agent of the County regarding this IFB. Any such unauthorized contact may disqualify the offeror from the procurement.

GENERAL WORK NOTES: (THIS SHEET ONLY)

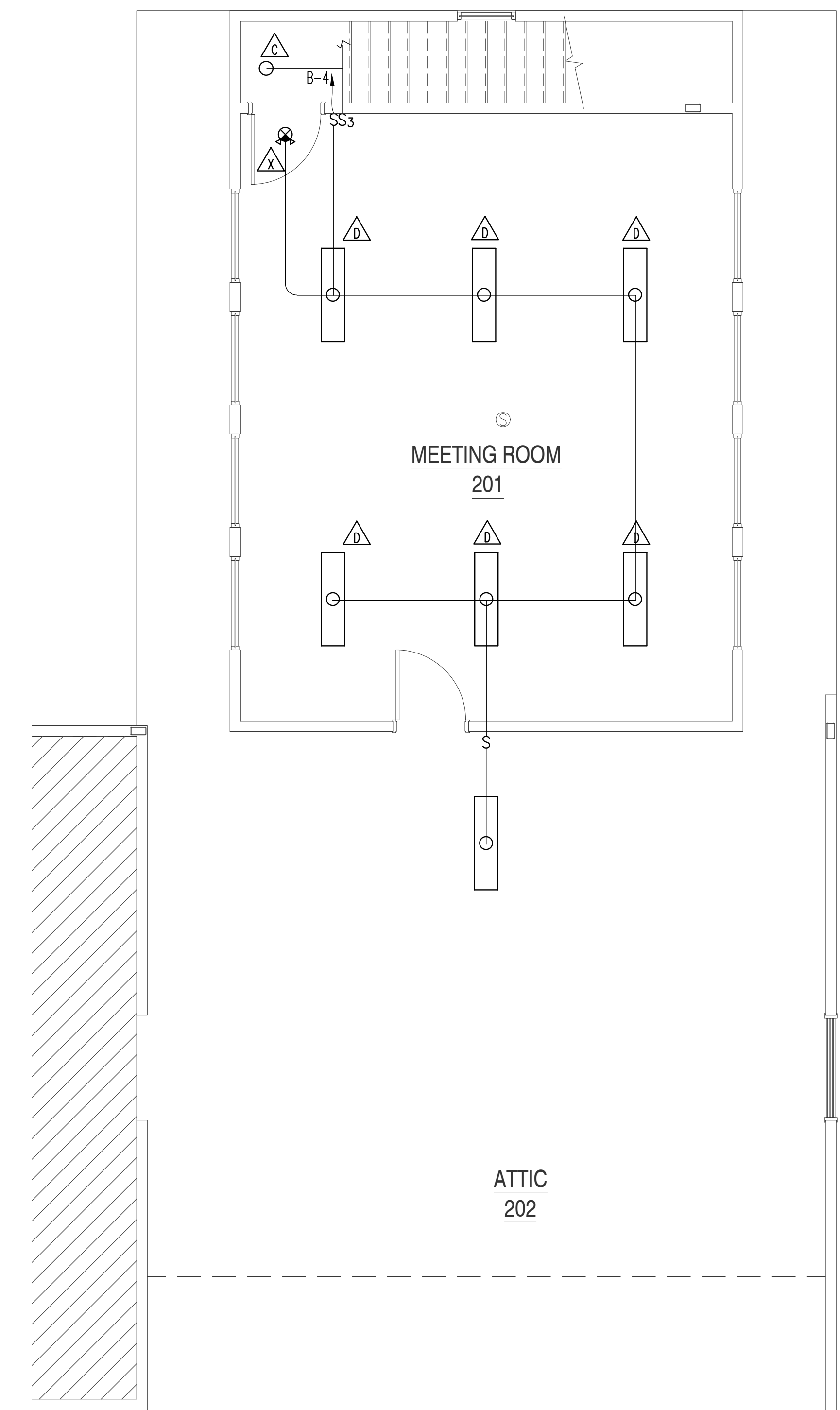
1. ALL CONDUIT AND WIRING SHALL BE RUN CONCEALED WITHIN WALLS AND ABOVE CEILINGS. NO EXPOSED CONDUIT OR WIREMOLD RACEWAY.

NEW WORK NOTES: (THIS SHEET ONLY)

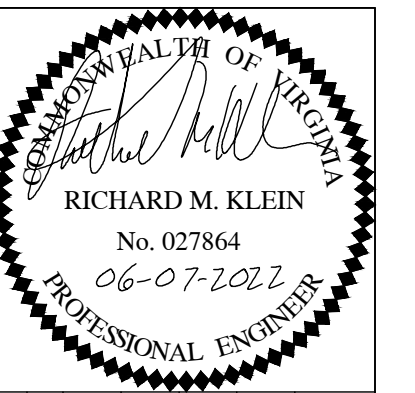
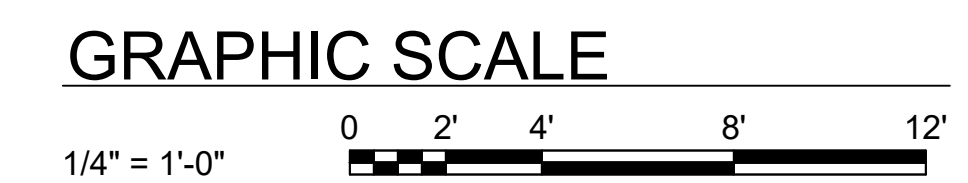
- 1 CONNECT NEW LIGHT FIXTURES TO EXISTING CIRCUIT(S).
- 2 LIGHT FIXTURE FURNISHED WITH INTEGRATED OCCUPANCY SENSOR FROM FACTORY. SENSOR SHALL BE MOUNTED ON END OF FIXTURES.
- 3 CONNECT TO THREE-WAY SWITCH ON 2ND FLOOR.
- 4 LOCATE ON CEILING SO FIXTURE DOES NOT INTERFERE WITH ATTIC ACCESS HATCH.
- 5 CONNECT CIRCUIT "A-5" TO 2ND FLOOR EMERGENCY LIGHTING FIXTURES.
- 6 CONNECT TO THREE-WAY SWITCH ON 1ST FLOOR.
- 7 WALL BOX DIMMER TO CONTROL LIGHTS IN ROOM.



ELECTRICAL 1ST FLOOR PLAN - NEW WORK LIGHTING
1/4" = 1'-0"



ELECTRICAL 2ND FLOOR PLAN - NEW WORK LIGHTING
1/4" = 1'-0"



REVISIONS	NO.	DATE	DESCRIPTION

192 Ballard Court, Suite 102
Virginia Beach, Virginia 23462
Phone (757) 965-2000 • Facsimile (757) 965-2001
www.mpdg-eng.com

McPHERSON DESIGN GROUP
STRUCTURAL ENGINEERS

NEW EXPANSION FOR WINDSOR LIBRARY
18 DUKE STREET WINDSOR, VIRGINIA 23487

ELECTRICAL FLOOR PLANS
- NEW WORK - LIGHTING

E201

PRINTED BY: COASTAL ENGINEERING
DRAWING NAME: 21-019 ELECTRICAL LING
Copyright 2022, McPherson Design Group. Any reproduction or unauthorized use of this document or any part of this document without the expressed written consent of McPherson Design Group is prohibited.